

Natural changes of population 1961 – 2022

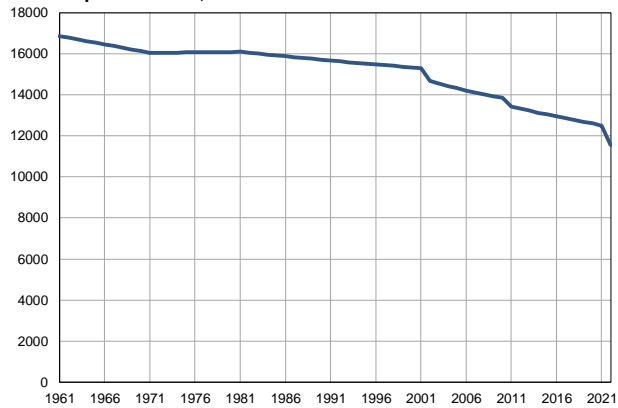
Profile
July 2023

Bački Petrovac

	1961	2022
Population size	16865	11550
Livebirths, Number	285	100
Deaths, Number	187	197
Natural increase, Number	98	-97
Infants deaths, Number	15	0
Livebirths, per 1,000 population	17	9
Deaths, per 1,000 population	11	17
Natural increase, per 1,000 population	6	-8
Infants deaths, per 1,000 livebirths	53	0

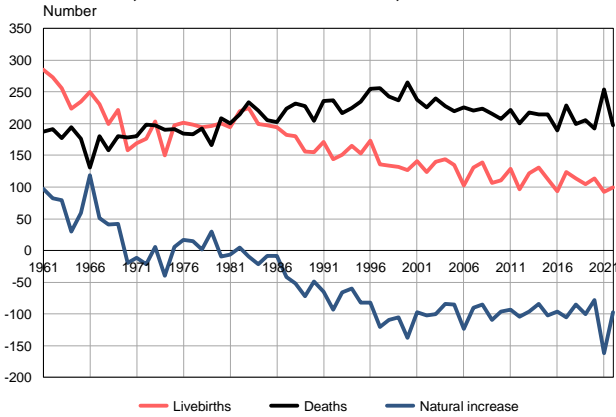
Source: Vital Statistics, SORS

Population size, 1961–2022



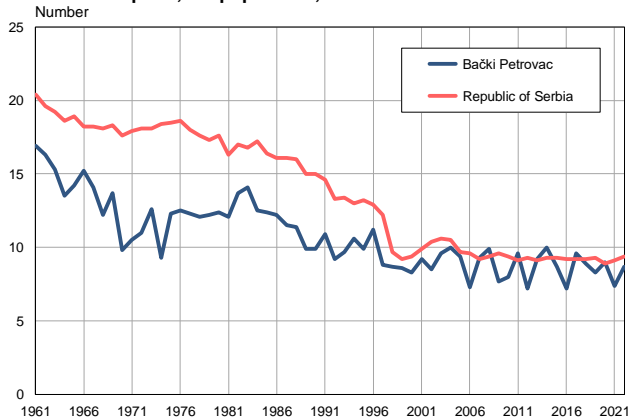
Source: Vital Statistics, SORS

Livebirths, deaths and natural increase, 1961–2022



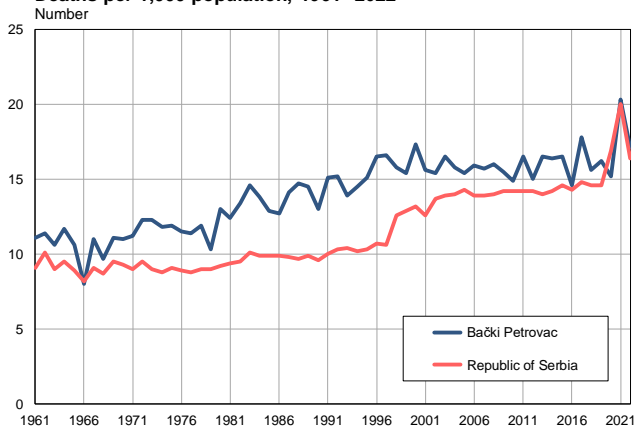
Source: Vital Statistics, SORS

Livebirths per 1,000 population, 1961–2022



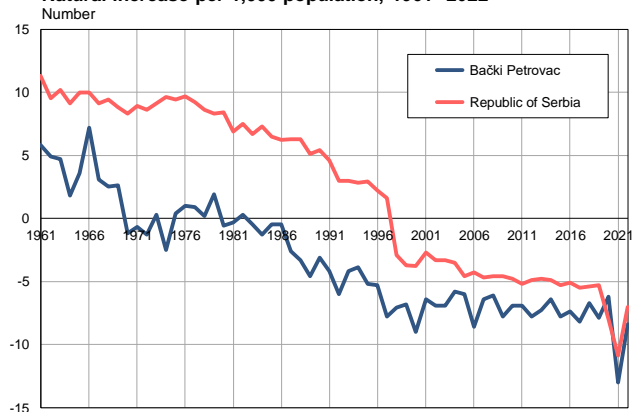
Source: Vital Statistics, SORS

Deaths per 1,000 population, 1961–2022



Source: Vital Statistics, SORS

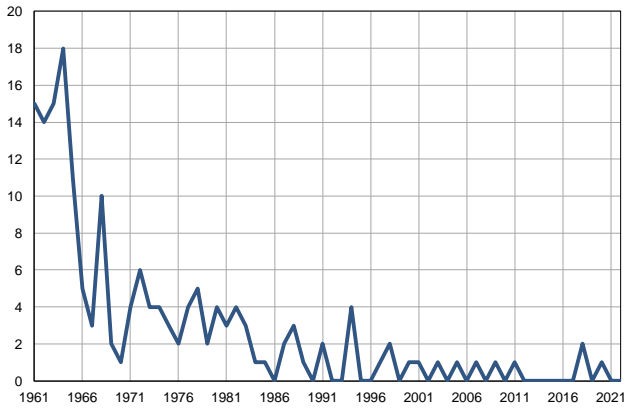
Natural increase per 1,000 population, 1961–2022



Source: Vital Statistics, SORS

Infants deaths, 1961–2022

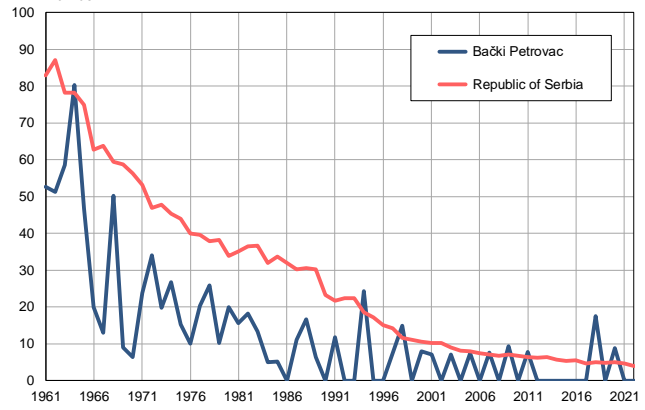
Number



Source: Vital Statistics, SORS

Infants deaths per 1,000 livebirths, 1961–2022

Number



Source: Vital Statistics, SORS

Table. Natural changes of population, Bački Petrovac

Year	Number of population	Livebirths	Deaths	Natural increase	Infants deaths	per 1000 population			Infant deaths per 1000 livebirths
						Livebirths	Deaths	Natural increase	
1961	16865	285	187	98	15	16.9	11.1	5.8	52.6
1962	16783	273	191	82	14	16.3	11.4	4.9	51.3
1963	16700	256	177	79	15	15.3	10.6	4.7	58.6
1964	16618	224	194	30	18	13.5	11.7	1.8	80.4
1965	16536	235	176	59	11	14.2	10.6	3.6	46.8
1966	16454	250	131	119	5	15.2	8.0	7.2	20.0
1967	16371	231	180	51	3	14.1	11.0	3.1	13.0
1968	16289	199	158	41	10	12.2	9.7	2.5	50.3
1969	16206	222	180	42	2	13.7	11.1	2.6	9.0
1970	16124	158	178	-20	1	9.8	11.0	-1.2	6.3
1971	16042	169	180	-11	4	10.5	11.2	-0.7	23.7
1972	16047	176	198	-22	6	11.0	12.3	-1.3	34.1
1973	16053	203	197	6	4	12.6	12.3	0.3	19.7
1974	16058	150	190	-40	4	9.3	11.8	-2.5	26.7
1975	16063	197	191	6	3	12.3	11.9	0.4	15.2
1976	16068	201	184	17	2	12.5	11.5	1.0	10.0
1977	16074	198	183	15	4	12.3	11.4	0.9	20.2
1978	16079	194	192	2	5	12.1	11.9	0.2	25.8
1979	16084	196	166	30	2	12.2	10.3	1.9	10.2
1980	16090	200	209	-9	4	12.4	13.0	-0.6	20.0
1981	16095	194	200	-6	3	12.1	12.4	-0.3	15.5
1982	16052	220	215	5	4	13.7	13.4	0.3	18.2
1983	16008	225	234	-9	3	14.1	14.6	-0.5	13.3
1984	15965	199	221	-22	1	12.5	13.8	-1.3	5.0
1985	15922	197	205	-8	1	12.4	12.9	-0.5	5.1
1986	15879	194	202	-8	0	12.2	12.7	-0.5	0.0
1987	15836	182	224	-42	2	11.5	14.1	-2.6	11.0
1988	15792	180	232	-52	3	11.4	14.7	-3.3	16.7
1989	15748	156	228	-72	1	9.9	14.5	-4.6	6.4
1990	15705	155	204	-49	0	9.9	13.0	-3.1	0.0
1991	15662	171	236	-65	2	10.9	15.1	-4.2	11.7
1992	15626	144	237	-93	0	9.2	15.2	-6.0	0.0
1993	15589	151	217	-66	0	9.7	13.9	-4.2	0.0
1994	15553	165	225	-60	4	10.6	14.5	-3.9	24.2
1995	15517	153	235	-82	0	9.9	15.1	-5.2	0.0
1996	15480	173	255	-82	0	11.2	16.5	-5.3	0.0
1997	15444	136	256	-120	1	8.8	16.6	-7.8	7.4
1998	15407	134	243	-109	2	8.7	15.8	-7.1	14.9
1999	15371	132	237	-105	0	8.6	15.4	-6.8	0.0
2000	15335	127	265	-138	1	8.3	17.3	-9.0	7.9
2001	15298	141	238	-97	1	9.2	15.6	-6.4	7.1
2002	14662	124	226	-102	0	8.5	15.4	-6.9	0.0
2003	14550	140	240	-100	1	9.6	16.5	-6.9	7.1
2004	14429	144	228	-84	0	10.0	15.8	-5.8	0.0
2005	14317	135	220	-85	1	9.4	15.4	-6.0	7.4

Table. Natural changes of population, Bački Petrovac

Year	Number of population	Livebirths	Deaths	Natural increase	Infants deaths	per 1000 population			Infant deaths per 1000 livebirths
						Livebirths	Deaths	Natural increase	
2006	14205	103	226	-123	0	7.3	15.9	-8.6	0.0
2007	14108	131	221	-90	1	9.3	15.7	-6.4	7.6
2008	14013	139	224	-85	0	9.9	16.0	-6.1	0.0
2009	13935	107	216	-109	1	7.7	15.5	-7.8	9.3
2010	13873	111	207	-96	0	8.0	14.9	-6.9	0.0
2011	13418	129	222	-93	1	9.6	16.5	-6.9	7.8
2012	13329	96	200	-104	0	7.2	15.0	-7.8	0.0
2013	13222	122	218	-96	0	9.2	16.5	-7.3	0.0
2014	13122	131	215	-84	0	10.0	16.4	-6.4	0.0
2015	13042	113	215	-102	0	8.7	16.5	-7.8	0.0
2016	12952	93	189	-96	0	7.2	14.6	-7.4	0.0
2017	12864	124	229	-105	0	9.6	17.8	-8.2	0.0
2018	12772	114	199	-85	2	8.9	15.6	-6.7	17.5
2019	12679	105	205	-100	0	8.3	16.2	-7.9	0.0
2020	12605	114	192	-78	1	9.0	15.2	-6.2	8.8
2021	12495	92	254	-162	0	7.4	20.3	-13.0	0.0
2022	11550	100	197	-97	0	8.7	17.1	-8.4	0.0

Source: Vital Statistics, SORS

Definitions

Population size

Number of population in the respective year. The data on the number of population in 1961, 1971, 1981 and 1991 are census data, while for the inter-census years the number of population was calculated as an average inter-census difference. From 2002 are given the population estimates that were calculated according to the census of population results and the annual statistics of natural mechanical population movements.

Livebirths

Absolute number of live births in the course of a year. Live born child means a child giving vital signs after birth (breathing, i.e. heartbeat), even for the shortest time, regardless the mother's pregnancy duration.

Deaths

Absolute number of deaths in the course of a year. Deceased is a person that whenever after having been born live, shows permanently stopped vital signs.

Natural increase

Natural population increase is the number of live births minus the number of deaths.

Infants deaths

Absolute number of infants deaths in the course of a year. Deceased infant is a child that after having been born live and before aged one year, shows permanently stopped vital signs.

Livebirths, per 1 000 population

Livebirths rate is the ratio of the number of live births and the population size in the respective year. The number of live births is divided by the population size and then multiplied by 1000.

Deaths, per 1 000 population

General mortality rate represents the ratio between the number of deaths and the population size in the respective year. The number of deaths is divided by population size and then multiplied by 1000.

Natural increase, per 1 000 population

Natural population increase rate is the difference between the number of live births and the number of deaths, in relation to the population size in the respective year.

Natural population increase rate = (number of live births - number of deaths) / population size * 1000

Infants deaths, per 1 000 livebirths

Infant mortality rate is the ratio of deceased children under 1 year of age and live births in the respective year. The mortality rate is expressed per 1000 live births.

Infant mortality rate = (number of deceased children under 1 year of age / number of live births) * 1000

Additional info:



Download all database data in Excel format:

[Data](#)



DevInfo profiles:

devinfo.stat.gov.rs/SerbiaProfileLauncher/?lang=en



DevInfo online database:

devinfo.stat.gov.rs/vitalna



For additional information or questions please contact:

devinfo@stat.gov.rs